

# WORD SEARCH

Can you find the popular pasta dishes for the letters below?



ELBOWS  
FETTUCCINE  
FUSILLI  
LASAGNA  
LINGUINE  
PENNE

RIGATONI  
RISONI  
SPAGHETTI  
SPIRALS  
TRIVELLE



We're family.



# WILD WAGON WHEELS

Colouring in time!



**We're family.**

# Meet the Aldentes

Can you guess their favourite food?

Gnocchi  
Geoff

Mich  
Shell

Trivelle  
Tom

Penne  
Pete

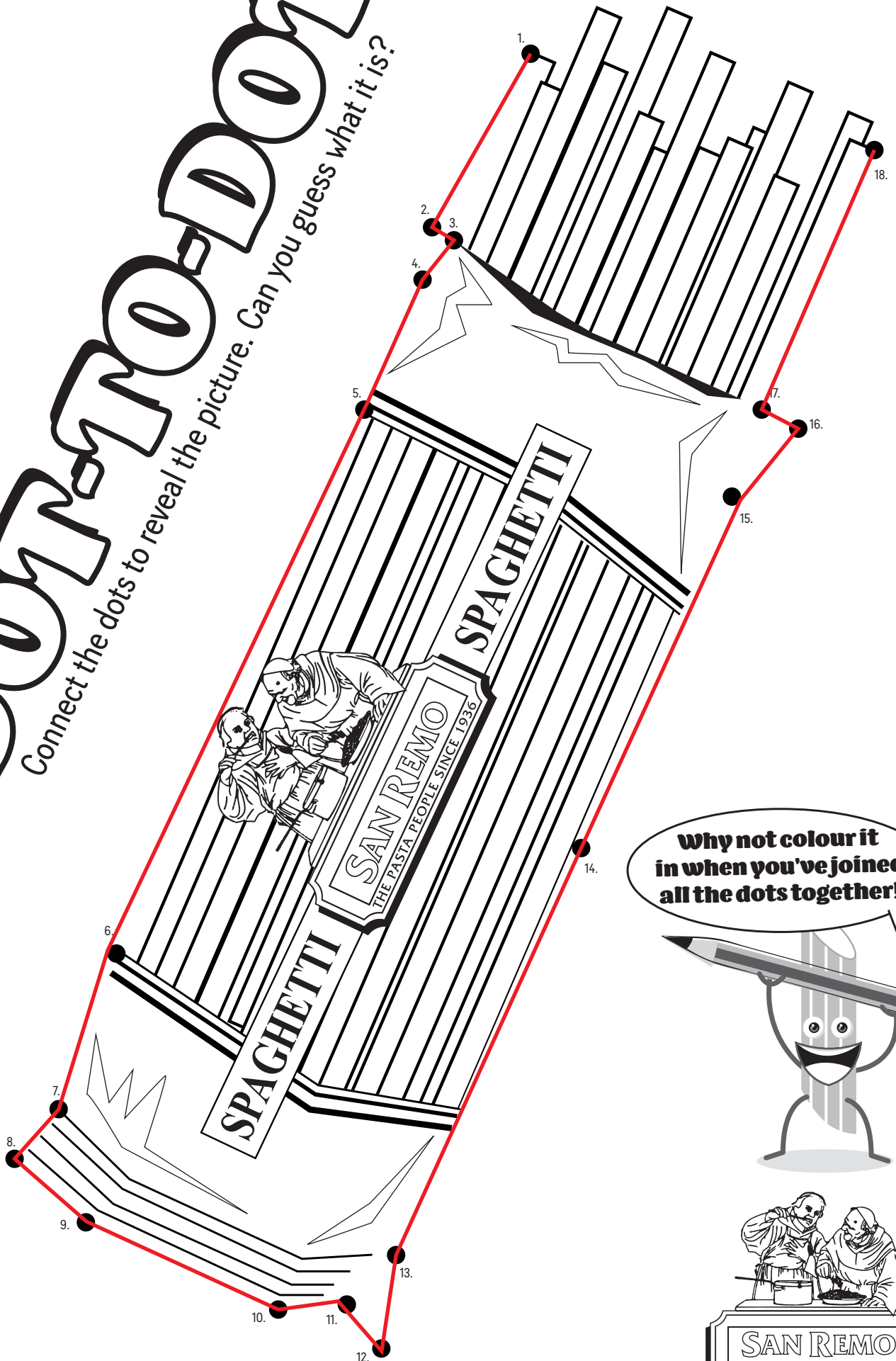
Spaghetti  
Sarah



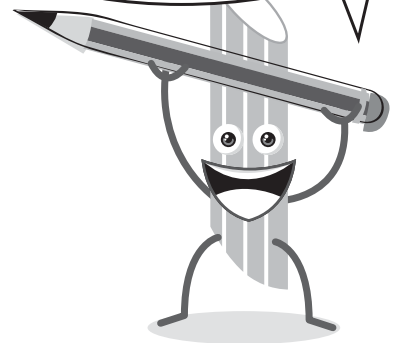
We're family.

# DOTTO-DOT

Connect the dots to reveal the picture. Can you guess what it is?



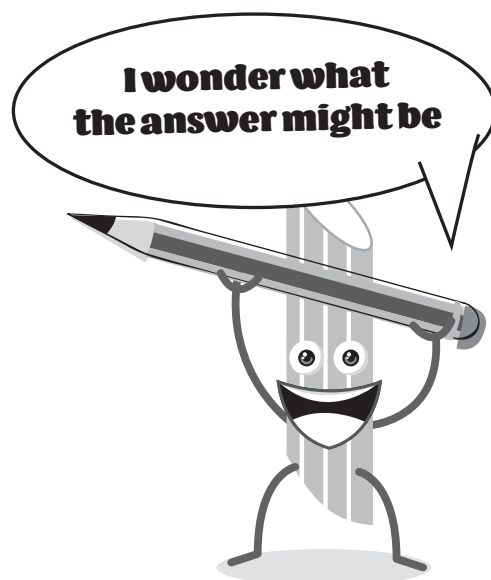
Why not colour it in when you've joined all the dots together!



We're family.

# CROSSWORD

Can you answer the clues below to complete the crossword?



## ACROSS

2. It is made from durum wheat and water.
5. It's a long wiggly pasta and very slurpy to eat.
7. It is what a chicken will lay.
8. These are little pillows of pasta with a delicious filling.

## DOWN

1. They plough the fields and harvest our durum wheat.
3. Made with sheets of pasta layered between lots of cheese and sauce.
4. Staying on the go and on the move.
6. You twirl your spaghetti with one.



**We're family.**

# Doodle Time

Draw your favourite pasta dish below.

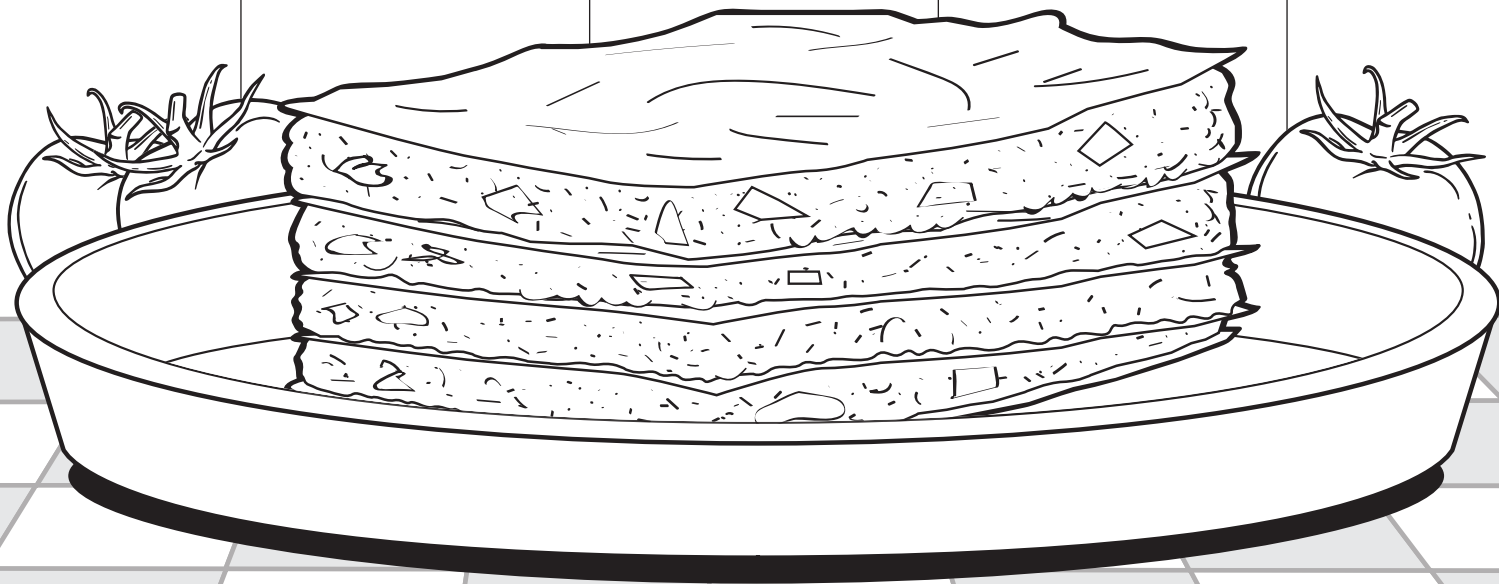
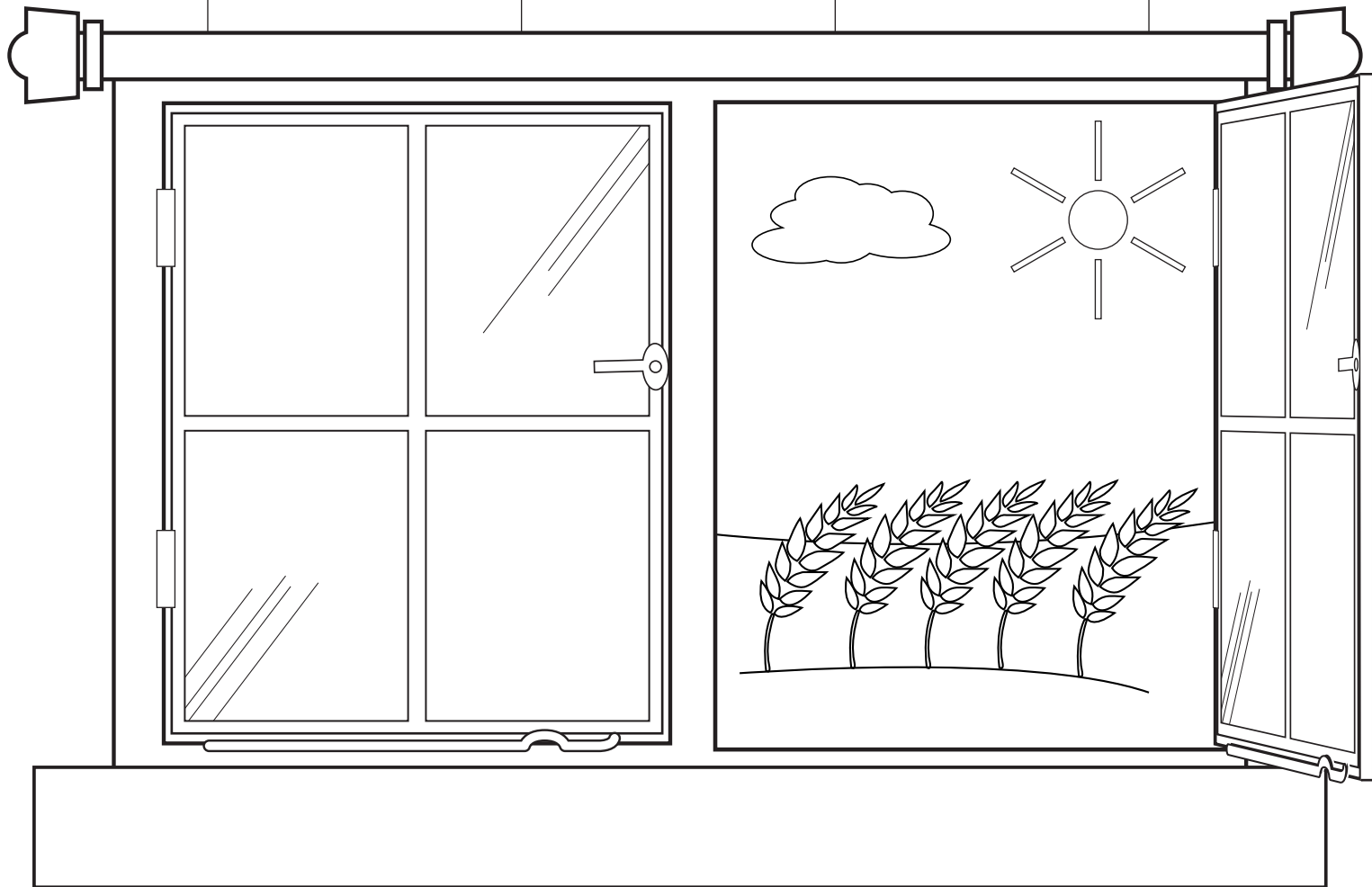


Did you remember  
to add your  
favourite sauce?



**We're family.**





# LAYERS OF LASAGNA

Colouring in time!



**We're family.**

# WORD SEARCH

Can you find the words from letters below?



BOWTIES  
DURUM  
FARMER

GRAIN  
WATER  
WHEAT

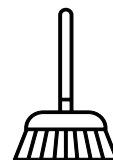
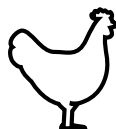
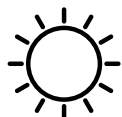
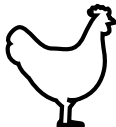
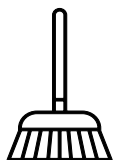
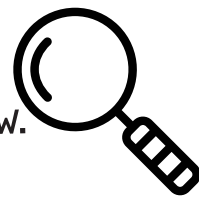


We're family.



# SPY DECODER

Can you work out the secret message?  
Write down the letters that match the symbols below.



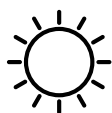
THE SECRET MESSAGE IS:

**SPAGHETTI BOLOGNESE**

## SECRET DECODING SYMBOLS



**a**



**b**



**c**



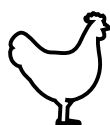
**d**



**e**



**f**



**g**



**h**



**i**



**j**



**k**



**l**



**m**



**n**



**o**



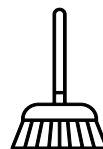
**p**



**q**



**r**



**s**



**t**



**u**



**v**



**w**



**x**



**y**



**z**

**Good Luck**  
with your mission

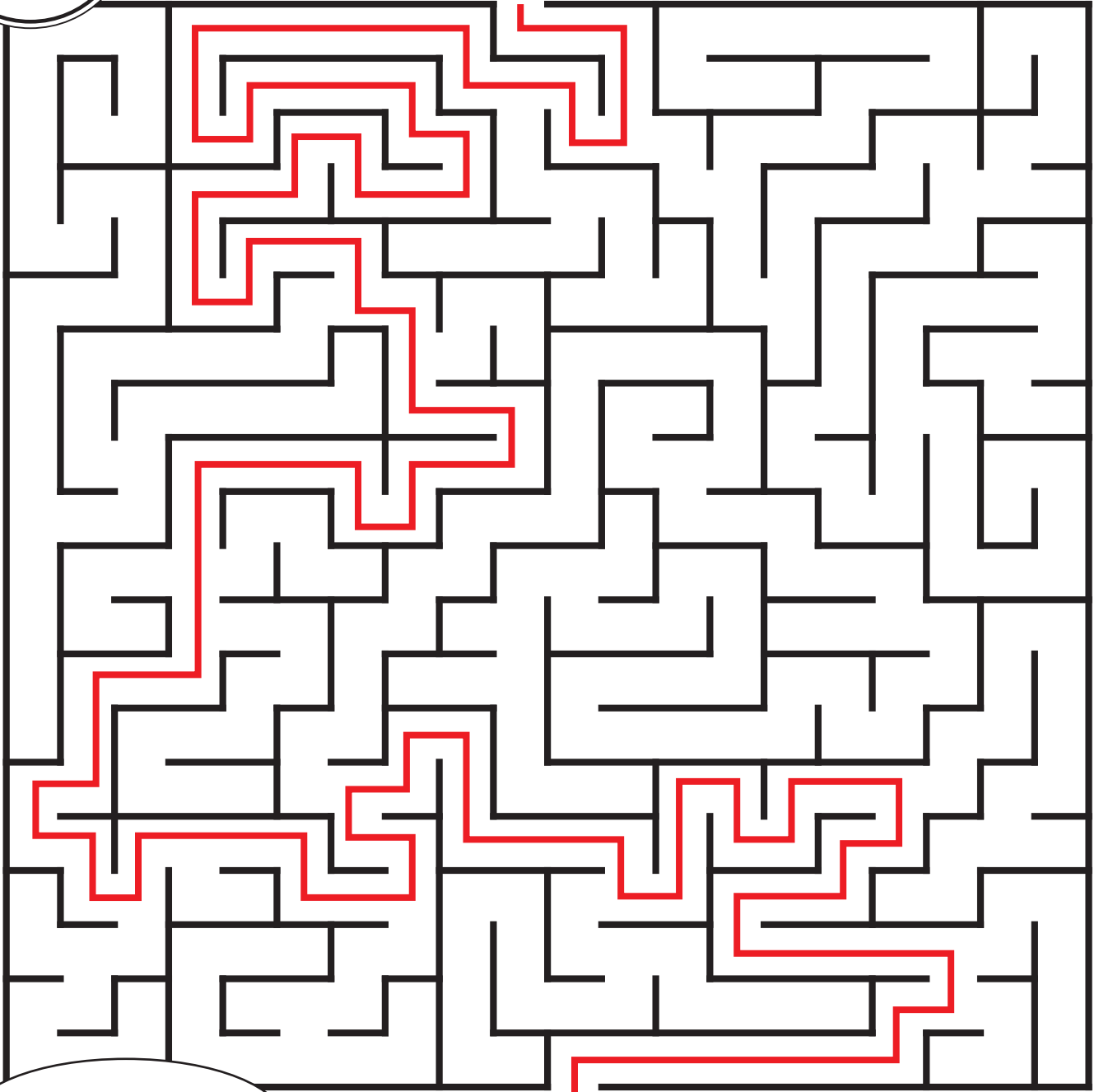
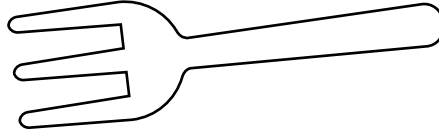


**We're family.**

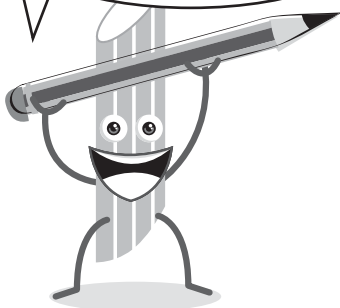
# PASTA MAZE

Can you help the fork find the pasta dish?

Try not  
to go the  
wrong way!



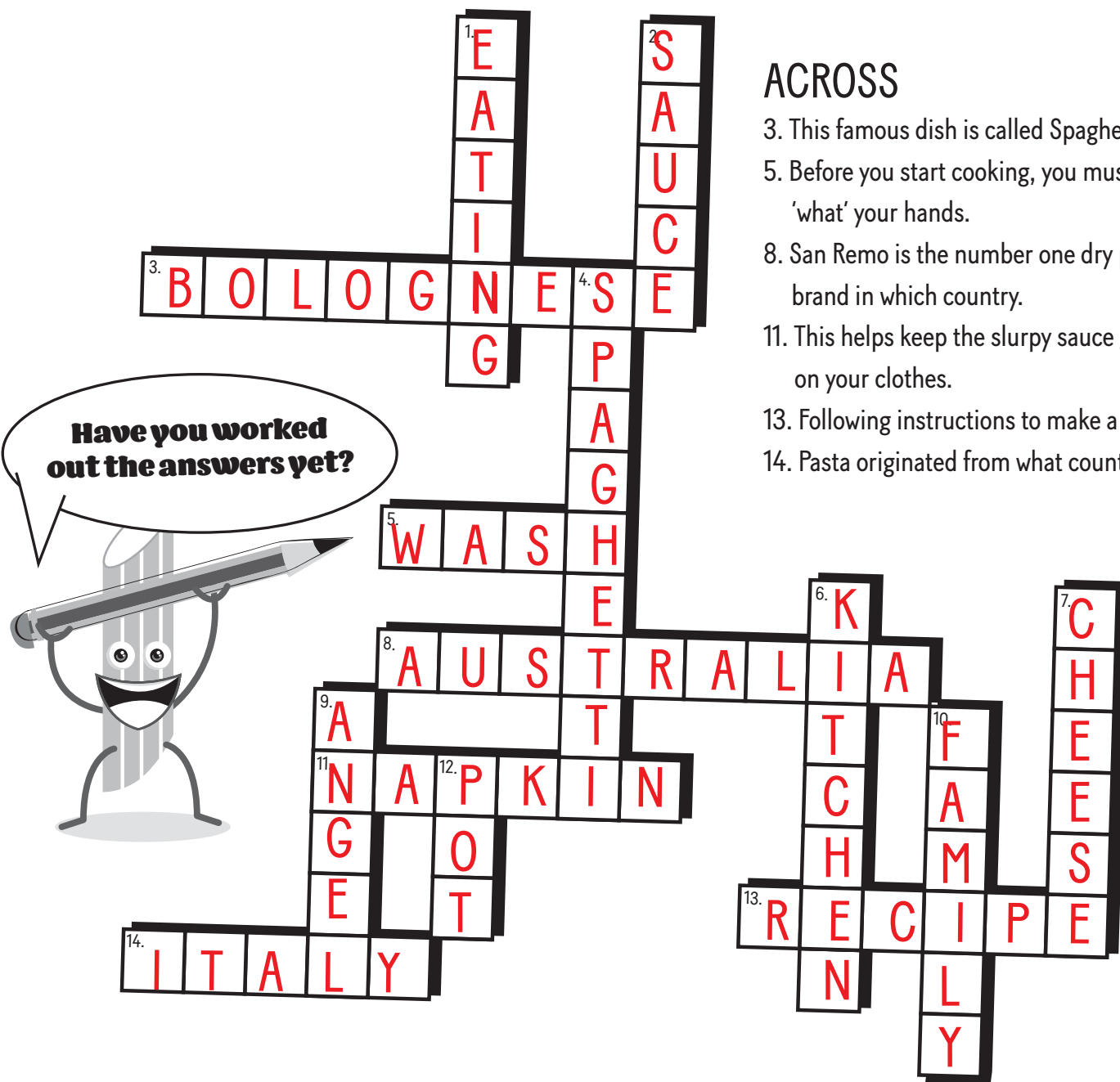
Can you find  
your way?



We're family.

# CROSSWORD

Can you answer the clues below to complete the crossword?



## ACROSS

3. This famous dish is called Spaghetti 'what'.
5. Before you start cooking, you must 'what' your hands.
8. San Remo is the number one dry pasta brand in which country.
11. This helps keep the slurpy sauce getting on your clothes.
13. Following instructions to make a meal.
14. Pasta originated from what country.

## DOWN

1. When you are chewing food in your mouth, you are.
2. Add a jar of this to your favourite pasta dish.
4. Long wiggly pasta that you slurp up to eat.
6. Where you prepare your food.
7. Add a sprinkle of this on top of your pasta.
9. This very thin spaghetti is known as 'what' hair spaghetti.
10. Once your pasta is ready, it can be enjoyed with your \_\_\_\_\_
12. You boil pasta in this.



**We're family.**



# RIBBONS OF FETTUCCINE

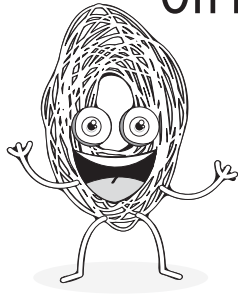
Colouring in time!



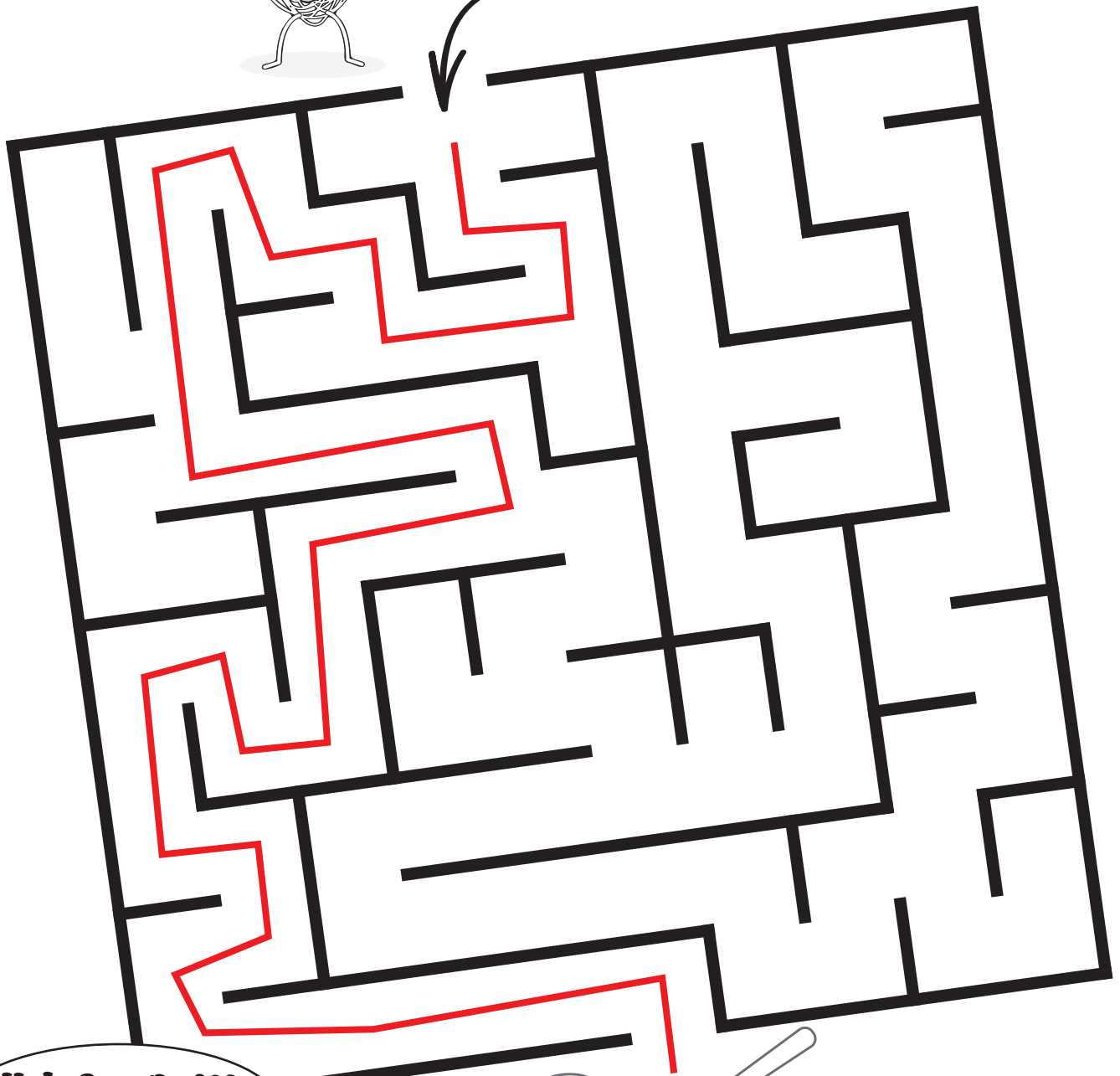
**We're family.**

# PASTA MAZE

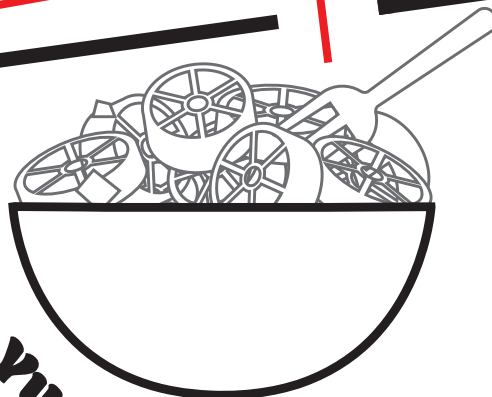
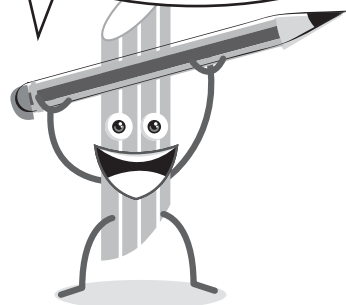
Oh no...Spaghetti Sarah has a rumbling tummy



**start here**



**Help Spaghetti Sarah find her pasta**



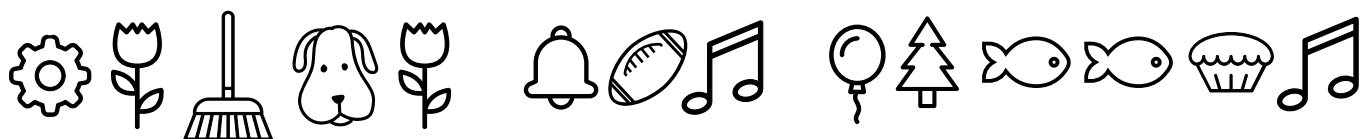
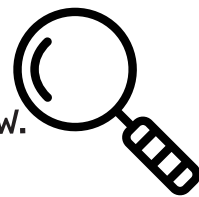
**Yummmmy!**



**We're family.**

# SPY DECODER

Can you work out the secret message?  
Write down the letters that match the symbols below.



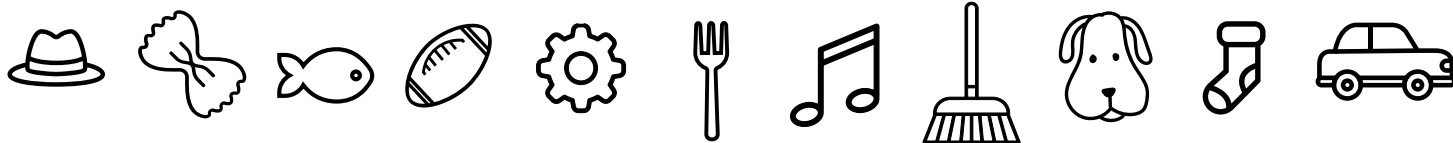
ARE WE HAVING PASTA FOR DINNER

THE SECRET MESSAGE IS: \_\_\_\_\_

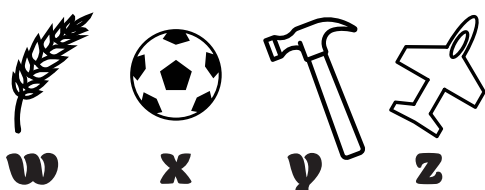
## SECRET DECODING SYMBOLS



**a b c d e f g h i j k**



**l m n o p q r s t u v**



**w x y z**

Good Luck  
with your mission



We're family.



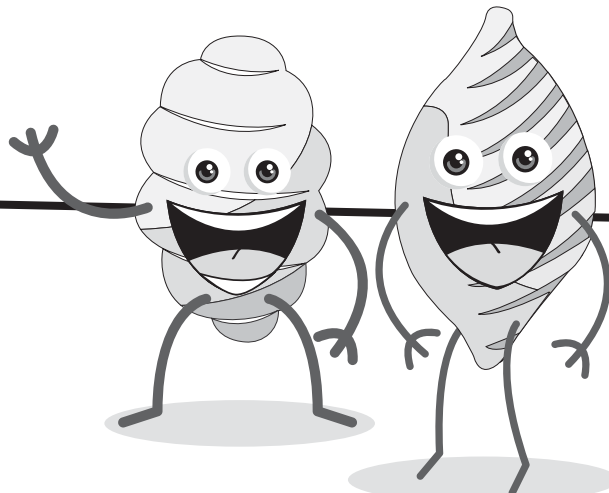
# Doodle Time

Design your own pasta characters

What will their names be? What will they look like?



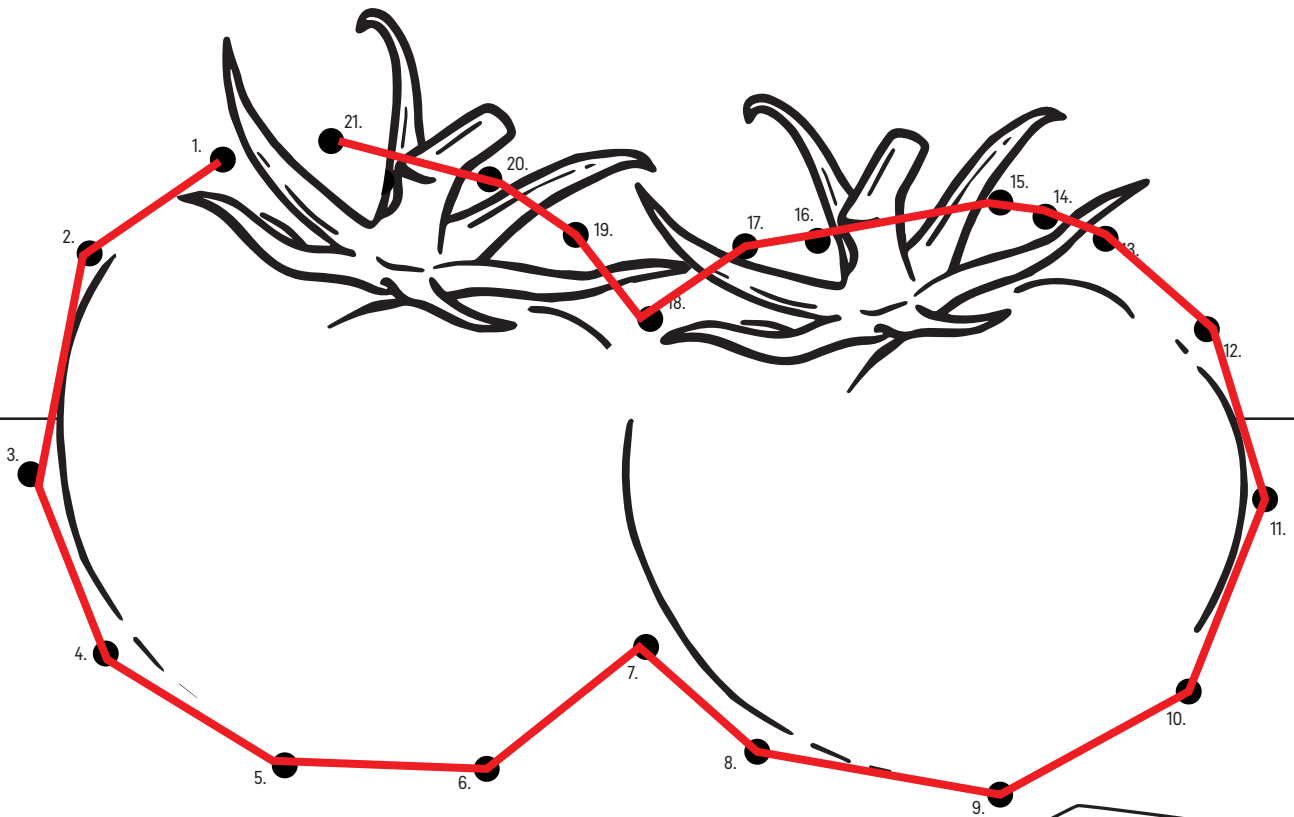
Did you remember  
to give your characters  
a name?



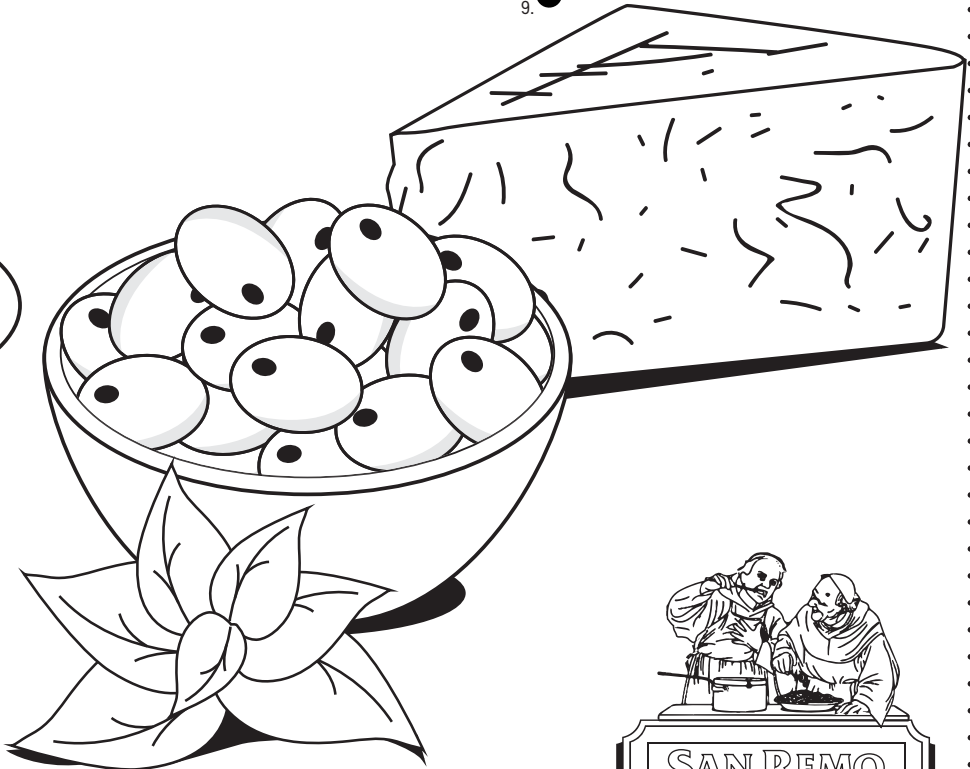
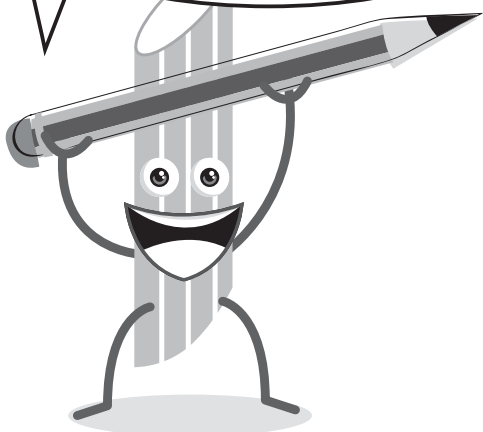
**We're family.**

# DOT-TO-DOT

Connect the dots to reveal the picture. Can you guess what they are?



**Why not colour it  
in when you've joined  
all the dots together!**



**We're family.**

# Pasta Jokes

These are so funny, they'll have you ravioling on the floor!!



**1. Where does pasta go to dance?**



HAHA

A. The Meatball

**2. Why didn't the fettuccine go out for Halloween?**

HAHA

A. It was too alfredo!

**3. What do you wear at a pasta convention?**

HAHA

A. Bowtie

**4. Did you hear about the guy with a pasta car?**

HAHA

A. He hit a fence and now it's al dente.

**5. What do you call a fake pasta?**

HAHA

A. An impasta



HAHA



**We're family.**

# Just for Laughs

HAHA

PASTA-BLY THE BEST PUNS EVER

HAHA

**You are tortellini awesome.**

**I walked right pasta her  
without realizing it.**



HAHA **Penne for your thoughts.**

**I'm so gnocchi to have you.**

**Noodles are part  
of my daily rotini**



**Life is about exploring  
pasta-bilities**

HAHA

**I am tortellini in  
love with you**



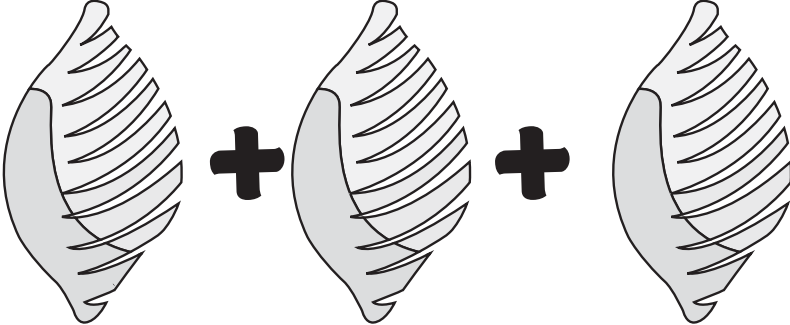
HAHA

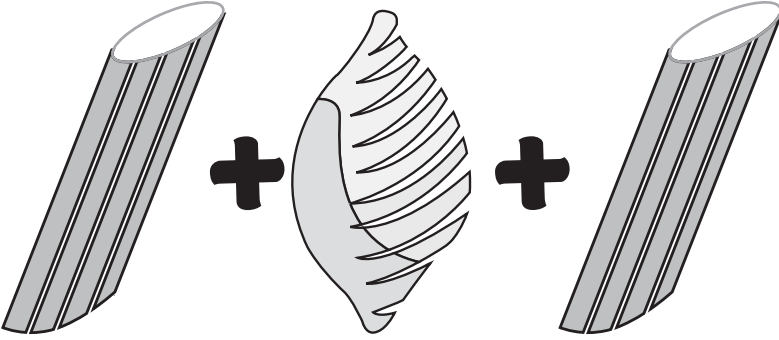


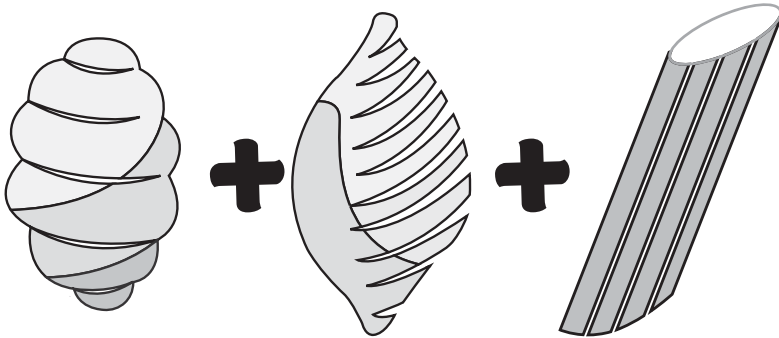
**We're family.**

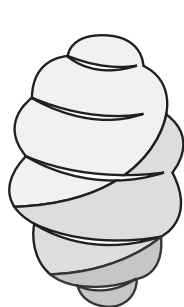
# Brain Tester

Can you work this maths problem out?


$$+ + = 9$$


$$+ + = 5$$


$$+ = 6$$


$$= 2$$

Which one is the missing number?

**3   2   5   4**



**We're family.**

AWESOME  
YOUR BIG <sup>✓</sup>BUMPER

# Activity Book



We're family.





**We're family.**

For delicious recipes visit [sanremo.com.au](http://sanremo.com.au)

  /sanremopasta